

UC-NRLF



\$B 274 385

984d
D746
o
ser.1

Occultism for Beginners

Copyright, 1917
By Halcyon Book Concern
Halcyon, California

TO THE
LIBRARY OF THE
CALIFORNIA STATE ARCHIVES

PREFACE

Occultism as a Science of life-forces, gives a key to the art of right living in accord with the Divine and Natural plan of evolution. That the Lessons of this First Series may be a practical help to all who read these pages is the earnest hope of the writer.

The Lessons were first printed in The Temple Artisan, a monthly magazine published at Halcyon, California, and have now been issued in booklet form because of the many requests for them, impossible of fulfillment otherwise.

To emphasize important points, if possible, with mantramic effect, some words and sentences in the Lessons have been purposefully put in a style and printed form designed to vitalize the mental impression of the reader.

Arcane truths are never acquired by thinking along lines of established precedent. Striking out boldly from the much trodden paths of accepted beliefs, the earnest student must blaze new trails in the Wonderland of Universal Nature, spiritual and material, always relating, however, each newly discovered truth to the Unity of the All in One and the One in All.

IV OCCULTISM FOR BEGINNERS

He who would know the origin and destiny of things; who would win the power to measure in his consciousness the infinitely great by the infinitely small, the infinitely small by the infinitely great; who would know the basic principles of his relations, spiritually and materially, to the Cosmic Whole and to all his other selves and parts, mineral, vegetable, animal, human and superhuman; who would know the Law of his interdependence with all life; such an one is a seeker after Occult Knowledge—and for all such, these Lessons are intended.

W. H. D.

CONTENTS

CHAPTER I.

THE MEANING OF OCCULTISM.

The Infinite mirrored in the finite, 2. Matter is materialized or crystalized Spirit, 2. Primordial Eternal Substance, 2. There is but one Force, 2. Atomic and molecular bodies, 2. The occult forces in metals, 2. Planes in metals corresponding to the physical, astral and spiritual bodies of man, 2. Composition of atoms: Electricity, Light or God, 3. The Cosmos is built by Number, 3. God is within the atoms, 3. Our unity in the Ultimate, 4. The scientific basis of the Brotherhood of Man, 4.

CHAPTER II.

THE CELLULAR MAN.

Each cell an entity, 5. The physical body is the God of the cell, 5. Difference between the amoeba and man, 6. The functions of cells, 6. Description of a cell, 7. Health and disease dependent on cells, 8. The ego of the cell, 8.

VI OCCULTISM FOR BEGINNERS

CHAPTER III.

SEVEN-FOLD CORRESPONDENCES OF CELL.

The seven principles of the egg-cell, 9. Plate I. Diagram of cell, 10. Chlorophyl, the mental center of plants, 12. Center of desire in cells, 13. Etheric spaces in cells, 13. All from one Divine Cell, 14. Our Spiritual basis in the Christos—the Central Sun, 14. The Radiant Center—the Christos, 14. In the Radiant Center all life in common, 14. All in one and one in All, 14.

CHAPTER IV.

VISIBLE AND INVISIBLE MAN.

Matter and Spirit opposite poles of Universal Substance, 15. The Body of the Heavenly Man, 16. Qualities are used in building soul structure, 16. The unity of spirit and matter, and their disappearance as such when unified, 18. Radium and the Higher Mind, 18, Plate II Showing Radium Rays, 19. The Alpha, Beta and Gamma rays of Radium, 20.

CHAPTER V.

THE NATURE OF THE SOUL.

The Real Self of All, 22. Color—the soul of metals, 22. The light within the atoms, 24. The outer form and the inner light, 24. The incandescence of the soul, 24. A Master of Light defined, 24. Conscious im-

mortality inherent in soul structure, 25. Light—a building material, 25.

CHAPTER VI.

SPIRIT AND MATTER.

Interpenetration of Matter and Spirit, 26. Symbol of two interlaced triangles, 26. The mystery of fire, 28. Material and spiritual fires, 28. The One Element, 29. Radium and the One Element, 29. Atomic instability of Radium, 29. Ethical applications of scientific truths, 29.

CHAPTER VII.

THE ROOT CONSCIOUSNESS OF MAN.

Man a God in essence, 30. The Spirit belongs to all; the soul to the many, 30. The body, the antithesis of the all, 30. Translation of personality, and the overcoming of the limitations of matter as in the case of Jesus after the crucifixion, 31. Cosmical Legislative Bodies, 31. Brain, heart, and solar plexus centers, 31. The Crucified Ego, 33.

CHAPTER VIII.

THE PITUITARY BODY.

Location and description of, 34. The ductless glands, 34. Doorways of Life, 36. Pituitary Body and Pineal Gland; points of contact between the outer man and the Spiritual Self, 36. Seat of mental

VIII OCCULTISM FOR BEGINNERS

principle in man, 36. The Energizer of Will, 37. The Cause of all changes in Nature, 37. Functions of the Pituitary Body, 37. The front lobe detects impurities in the blood by the sense of smell, 38. Disease resisting forces depend upon action of the Pituitary Body, 38. Physiology and psychology of Pituitary Body, 38.

CHAPTER IX.

PITUITARY BODY AND PINEAL GLAND.

Vacuoles and Ventricles, 40. Spaces in cell correspond to Ventricles of the brain center and canal of spinal cord, 40. Mystery of the inner breath, 40. Plate III. The Brain, 41. The third Ventricle and the Infundibulum, 42. Anatomy of Pineal Gland, 42. Influence of Pineal Gland on sex function, 43. Atrophy (wasting) of Pineal Gland at puberty, 43. Sexual function inhibited when Pineal Gland is active, as prior to puberty, 45. Earlier sex ripening results when Pineal Gland function is inhibited either normally or abnormally, 43. The Brain centers of vision, 44. The Optic Thalami, 42. Spiritual functions of Pituitary and Pineal Glands, 46.

CHAPTER X.

THE BRAIN, A SYNTHETIC CENTER.

The Brain is androgynous—male-female, 49. The

Brain and the Third Root Race, 49. Akasic and magnetic energy within the cranium is the atmosphere of the Third Root Race, 49. Creation of mental images by brain entity, 50. A Third Sex, 50. The highest spiritual ideations must be male-female, positive-negative, 51. The Divine Marriage, 51. Use of the fiery emanations of the blood by the Pituitary and Pineal Gland, 52. The cause of psychic vision, 52. Cause of spiritual clairvoyance, 52. The union of the fires of the Pituitary and Pineal Glands unify the Sixth and Seventh senses 52. The Marriage of Matter and Spirit; Venus and Hermes; Love and Wisdom, 52.

CHAPTER XI.

REINCARNATION.

Natural thought is heaven born, 54. Reincarnation of cells in the Body-Cosmos, 55. Humanity—a state of consciousness, 57. Nothing is lost by death 58. No place to lose it in, 58. We work with God building the heavens as well as the earth, 58.

CHAPTER XII.

THE SEVEN HARMONIES.

The Seven Heavens or states of consciousness, 59. The Heavens of the body are the seven cavities of the brain, 59. This is an etheric magnetic realm in which the astral self contacts the material brain, 60.

X OCCULTISM FOR BEGINNERS

Thoughts, desires, health, and disease, 60. Why high thoughts and desires spiritualize, and low thoughts and desires, materialize the body and influence our well being, 60. The Inner building-light, 61. Effect of thoughts and desires on the etheric substance of the chamber of Harmonies, 61. Men, angels, gods and devils bound together in the One Life, 62. Man and God being perfected by the perfection of his cells, 62. The etheric substances of the Seven Harmonies is the real link between the Self of matter and the Self of spirit, 62.

CHAPTER XIII.

TEN BASIC TRUTHS.

Every part, organ and tissue in man has its celestial correspondence in the Heavenly Man—God, 65. Man, thus being an image of God, 65. Enumeration of basic truths, 65.

CHAPTER XIV.

THE MYSTERY OF THE HEART.

Origin and development of the blood vessels and the heart, 69. Development of the embryo corresponds to the development of the Cosmos, 70. The Inner Breath, 70. The breath of life breathed into the rupic spaces of the cell, 70. How worlds and creatures come into ex-istence, 71. Analagous Spheres or Spaces within the earth transmitting ter-

restrial desire force, 71. Blood—the vehicle of breath and desire, 71. Traits and tendencies stored up in the kamic creative cell, 72.

CHAPTER XV.

SPIRITUAL CORRESPONDENCES OF THE HEART.

The heart of our Solar system beats once every eleven years, 73. The Auric Heart, 73. The Kingdom within, 74. Within the within—the Source of All, 74. The Sanctuary, 74. Center of Spiritual, psychological and kamic consciousness, 75. The Heart, the center of spiritual consciousness, 76. The Heart—a Central Sun, 76. The heart is a doorway through which Infinite love and compassion may flow, 76. How to read Nature's cosmic Book of Knowledge and Wisdom, 77.

The Heart of God is the container of the divine in all things and creatures, and therefore of the divine in thee.

—**From The Mountain Top**

The sunlight of heaven fell on the brink of a New Morning—and the Angel in the clod awoke.

—**The Temple Artisan**

CHAPTER I.

The Meaning of Occultism.

By Occultism is meant a knowledge of the finer forces of Nature. The finer forces of nature are those not generally perceptible to the outer Five Senses of man. But there is no sharp line between the inner, finer forces, and the outer, grosser forces. Likewise between the outer material senses and the inner spiritual senses. These merge gradually one into the other.

The outer material forces manifest when outer conditions are made for that purpose. The inner spiritual forces manifest when inner astral or spiritual conditions are made on inner planes. The outer, however, is dependent on the inner as the Material Universe is dependent on the Spiritual Universe. The outer is a **reflection** of the inner.

Steam, Electricity, Magnetism, Chemical Action, Gravitation, Light and Sound are outer, perceptible forces based on inner causes.

Thought, Will, Desire, Love, Vital Mag-

netism and so on, are occult forces, not perceptible to the five senses save by their effects. As with the man so with the Universe as a whole. The Infinite is mirrored in the Finite.

What we call matter is materialized or crystallized spiritual substance—that is, the one primordial eternal substance in a lower rate of vibration. Likewise, there is but one Force. The **higher** differentiations of this one force are the finer occult forces of life, simply having a high rate of vibration in spiritual substance. The exterior forces are lower rates of vibration in the same substance. **There is no such thing as vibration in itself. Something must vibrate.**

Atomic and Molecular Bodies.

In gross matter, occult forces and potencies reside which are unlocked as proper conditions are made. These powers may manifest on one plane or another. Gold, silver, lead, iron are material substances, in mass, not having any occult properties. But as we delve and uncover the soul of these metals we meet and know the occult finer forces inherent in them. In mass substance they correspond to the Physical Body. In their molecular nature they correspond to the Astral Body. In their **ATOMIC NATURE** to the Spiritual Body.

More and more wonderful are the forces liberated as we approach the atomic nature of matter, from the lowest Inorganic to the highest Organic. In the ultimate the organic and inorganic are one. The atoms of both are composed of pure ELECTRICITY, or LIGHT, or GOD, call it what name you will. Science calls the units composing this Deific substance Electrons. A certain number of Electrons grouped together will form the metallic elements, the occult basis of a metal as gold; another number of silver, iron, oxygen, hydrogen, etc. The Cosmos is built by **Number** dividing Time in perfect MEASURE. This is the Song of Life and Being.

As above, so below; as within, so without; as in the beginning, so at the end.

God is Within the Atoms.

The human body as a mass of cells does not manifest any occult properties. It is simply organic matter. But the cells make man more than the rocks which are non-cellular. The cells are **lives**..... Within the cells are molecules. This is the lower astral man. Within the molecules are atoms. This is the spiritual man. Within the atoms is **God—Light**—the ultimate. Within the Ultimate we are one with all crea-

tures, mineral, vegetable, men, or Gods. There is but one God, but one Life, but one Ultimate, and we are THAT.

In THAT reside all Sound, Number, Color, and Form—Eternal and Infinite. Creation is the utterance of these Forces in infinite variety, combination, quality and form, from rush light to blazing suns, from infusoria to God.

This lesson is designed to show the fundamental and identical basis of matter and spirit and all life in the one life however diverse the multitudinous manifestations of the same may be in time and space. By analogy it therefore also shows the occult and scientific basis of the Brotherhood of Man and all creatures as one in the Eternal Father-Mother-Brotherhood of God.

The next lesson will deal with the occultism of the Physical Body.

CHAPTER II.

The Cellular Man.

The Physical Body is the Cellular Man. Each grade of matter composing the body from marrow to bone, tendon, muscle, fat, blood and nerve tissue is made up of billions of microscopic cells. Each cell is an entity having its life cycle from birth to death and possessing consciousness and memory, as well as function—its life work. The collective consciousness of all the cells of the body is the consciousness of the physical man, thus enabling the physical body to perform all its diverse functions. In other words, we can say that the whole physical body is to each cell of the same, what God is to man. In the physical body each cell lives, moves and has its being. In the universal Man-God we live, move and have our Being. Complete identification of consciousness with the Greater Being is possible when complete correlation is made by any one Unit with the inner light—life of all Units. Then the one becomes the All.

What is the cell? From mud puddle to man is the history of the evolution of the cell, and we still have histological evidence of living examples of all the stages passed through. Scoop a handful of muddy water from the nearest mud puddle, or ditch, and place a drop of same under a high power microscope, by careful observation we soon separate from other objects a small irregularly rounded object, and as we watch, we note its form changing more or less and that it has the power to move by protruding a part of itself and then drawing the other part after. It is almost transparent but we note clearly defined, the limiting membrane or outer cell wall and inner nucleus. This object we are observing is called the Amoeba—a one-celled creature. What is the difference between this amoeba and physical man? The amoeba is made up of **one** cell; physical man is made up of **billions** of cells.

The Function of Cells.

Physical man has millions of muscle and bone cells to help him move from place to place. He also has millions of other kinds of cells to digest his food; millions of others to aid the circulation of the fluids in his body; millions of others to receive and transmit his nervous

forces; millions of others to generate his kind; millions of others to think with. In the case of the **amoeba**, it has but one cell to do all this with. But it **does** all these things singly, in that lesser degree, one cell working alone as compared to countless numbers operating together. For the **amoeba** has a nervous, muscular, circulatory, reproductive, digestive, secretory and excretory systems—but these are all **combined in one cell**. It is like thinking of the heart and lungs of man digesting his food, or of breathing with the stomach, or of all the functions of the body now done by many specialized cells, being done by **any** one of them.

Description of a Cell.

A cell may be defined as a microscopic mass of matter called Protoplasm enclosing another smaller mass of matter called the Nucleus. In the egg we have a visible example of the constitution of a cell. The shell is the outer limiting membrane; the white of the egg is the protoplasm; the yolk is the nucleus. Likewise every microscopic cell is made up of outer limiting membrane, fluid contents of protoplasm, and the nucleus. In some lower forms of life the nucleus may be absent. The highly evolved nerve cells have a nucleus within the nucleus,

called the nucleolus. Protoplasm is a very complex body, but is made up mainly of albumenoid material. Granules are frequently present in the protoplasm; also small cavities full of fluid, which appear and disappear and change their position from time to time.

Health or Disease Dependent on Cells.

The Nucleus is the centre of the **formative** activity of the cell. It is the vehicle of the Ego of the cell. The cell itself is the seat of Nutrition and Function. Thus Health and Disease are terms referring, not to the body as a whole, but to the cells of which it consists.

The Physical Body is the correspondence of the Spiritual Body. To know the physical body we must know the nature of the cells. Future lessons will show this, and how Unity, Co-operation and Brotherhood depend upon the minute units getting together as the cells do to form an organ, or as the planets do to form the solar system, before larger Celestial or Terrestrial advancement is possible. **There are no little things.**

The next lesson will show particularly the occult correspondence and the Seven-fold Division of the Cell.

CHAPTER III.

The Seven-fold Correspondences of the Cell.

The cell, we have defined as a microscopic mass of matter called Protoplasm enclosing another smaller mass of matter called the Nucleus. We have also shown that in highly evolved cells another nucleus called a nucleolus is visible within the larger nucleus.

The cell is a minute Cosmos in itself and must obey the laws of universal correspondence and thus have represented in it the seven planes of being. Let us now trace this correspondence and Seven-fold division of the Cell.

Starting from without we have:

1. The Cell Wall, corresponding to the Physical Body.
2. The inner lining of the cell, corresponding to the lower Astral Body.
3. The Protoplasm, corresponding to the Vital Principle—Prana.
4. Granules in this Protoplasm corresponding to Kama Manas, the Lower Mind.

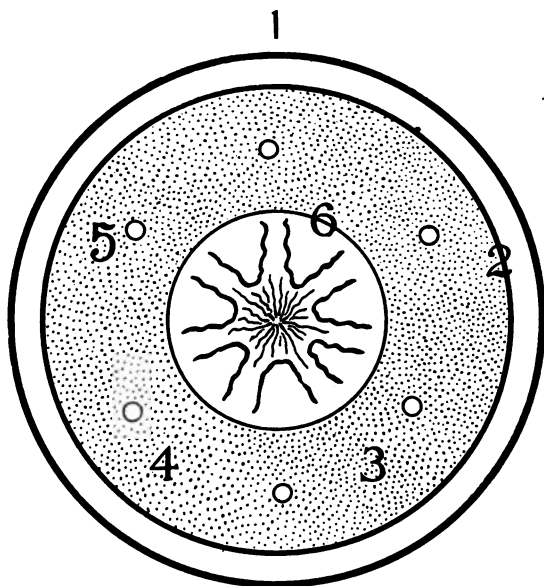


Plate I.

DIAGRAM OF A CELL

Showing: (1) cell wall; (2) inner lining; (3) protoplasmic contents; (4) granules distributed throughout protoplasm; (5) spaces or vacuoles in protoplasm; (6) the nucleus; (7) within the nucleus, the nucleolus containing the radiant center, the point of contact with Atma.

5. Spaces in this Protoplasm corresponding to Kama Rupa, Lower Desires.

6. Nucleus, corresponding to the Higher Manas, or Mind.

7. Nucleolus, corresponding to the Buddhic principle. A radiant Centre in the nucleolus called the Centresome by some biologists, is the point of contact for Atma, which, however, is no principle as all are included in It.

Applying these same correspondences to a visible cell that we are all familiar with may make it plainer. The egg is a single cell. We find in it correspondingly:

1. The outer shell.
2. An inner layer on this shell.
3. The white of the egg.
4. Granules in this white.
5. Spaces in it, if examined closely.
6. The yolk.
7. Within the yolk, by aid of the microscope, the Germinal Vesicle. Within this Germinal Vesicle, the Germinal Spot.

Most of these principles mentioned are self-evident. A few may need explanation. The inner lining of the cell corresponds to the lower vital astral body. It is a **condensation** of the vital principle, the protoplasm, and chemically shows the same matter, but it takes a **form**

which gives the model form to the outer membrane. In the case of the egg, calcareous matter is deposited on the outside of this inner membrane. The inner lining or membrane however, comes **first**.

Chlorophyl, the Mental Centre of Plants.

The Granules corresponding to the lower mentality are centres of tremendous activity. This activity may be **progressive** or **retrogressive**. Retrogressive changes in these granules will cause the cell to become abnormal, unhealthy and diseased. Progressive changes keep the cell functioning naturally promoting its own growth as well as the growth and development of the organism of which it is a part. For instance, in vegetable cells, these granules contain **chlorophyll**, which is the green coloring matter of all plants, and it is this chlorophyll which in the presence of sunlight decomposes the carbonic acid gas which the plant breathes in through its leaves (lungs) and **fixes** the carbon of this gas as a part of the woody structure of the plant—and so builds it up. The correspondence to the action of the lower mind is here exact. The lower mind reaches out and appropriates what it needs, and rejects what it does not need. **It always seeks to build itself**

up. The same with the granules of the animal cell. The lower mind, granule, of say a liver cell will take from the blood stream what it needs and reject all else; functioning normally it builds itself and its organ.

The Centre of Desire in Cells.

The clear spaces called vacuoles in the protoplasm of the cell correspond to the Kama Rupa, the Lower Desire principle. The spaces may be empty or contain a watery fluid. The etheric or magnetic desire-life of the cell acts through these spaces, driving the cell to act through the desire energy transmitted. These spaces in the cell correspond to the ventricles of the brain and the central canal of the spinal cord through which the etheric, astral man, receives and transmits impulses. These spaces or ventricles have to do with the mystery of the inner breath.

Some may deny these great functions to the granule, and spaces, the lower mind and desire vehicle of the cell, but it is true and biologists will demonstrate it in the near future. What the writer here gives is based on the exact laws of correspondence which inner knowledge confirms.

The Universe, with all its worlds and creatures, is an organism, and emanated, differentiated from **one primordial cell**, just as the chicken emanates—differentiates from the one primordial cell, the egg. In the case of the chick we have this one cell, differentiating into many cells forming various organs and tissues, until we have a multicellular animal born from one cell. It is the same with the birth of a human being—all of our various cells making up our many organs having been produced by the division of one cell—the ovum or egg of mortal woman. As with the human, so with the Divine, as with the cell so with the cosmos. All proceeds from the One and to the One all must return. Our fundamental spiritual basis is in the Central Sun, the Christos—who is the radiant Point contacting the Nucleolus (the spiritual self) and giving life, energy and creative purpose to all the differentiated parts. Cut off this Radiant Centre and the egg, the cell, the man, the cosmos would shrivel up and disappear. In the Radiant Point all beings have their life in common. In that point or plane we are all of one blood, (life) as St. Paul says and there we find the occult basis of the law of Universal Brotherhood—**ALL IN ONE AND ONE IN ALL.**

CHAPTER IV.

Visible and Invisible Man.

In the last two lessons we have dealt particularly and strongly with the Physical Man and the Physical Universe. This for a good reason. We cannot understand spirit without understanding matter. We cannot understand matter without understanding spirit. One is the perfect reflection and correspondence of the other. Both matter and spirit are opposite poles of the same Universal Substance. Every electrical battery has two poles. We could not understand the nature of that battery by studying one of its poles and refusing to recognize the other. Some teachers who lack synthetic consciousness tell their pupils to ignore matter and simply study spirit. Others say to ignore spirit and study matter. There must result a lack of soul balance in such teachings and its students, beating the mental air with the one wing of matter, or the one wing of spirit, simply move around perpetually in a limited circle and get—nowhere.

As **physical** beings we must know ourselves. As **spiritual** beings we must know ourselves. Some day we must stand in a physical body and be CONSCIOUS of the seven planes from the lowest to the highest. Otherwise no Mastery is possible. Hence the importance of the physical. The Universal laws of Correspondence will demonstrate spirit to us—as we understand the laws of matter. The same laws of Correspondence demonstrate matter to the spiritual man as he understands the laws of his realm.

The visible Universe is the Body of the Heavenly Man. The terrestrial man is an epitome of this Heavenly Universal Man, as the drop of water from the ocean is an epitome of the ocean with all its elements. The visible Heavenly Man is the material pole of the invisible Spiritual Divine Man, called God in its totality. Correspondingly, the material body of man is the external physical counterpart of forces and qualities which are the real substances composing the Soul Man. For Faith, Hope, Charity, Sympathy, Compassion, Justice, and so on, are in reality, spiritual grades of matter which are used in the building of soul, as hydrogen, oxygen, iron, potassium, sodium, lime, are used in building the physical body.

The Polarity of Matter and Spirit.

When Universal, Primordial Substance manifests polarity, it differentiates into matter and spirit. When a drop of water manifests polarity, it differentiates into hydrogen and oxygen. A great force of affinity draws hydrogen and oxygen to chemically mingle and form water. Correspondingly, Spirit and Matter generate tremendous activities in seeking reunion. This great universal DESIRE for Unity engenders ceaseless drawing and pushing forces on all planes, and is the real cause of all motion and phenomena of life and nature in the cosmos. As Hydrogen and Oxygen disappear as such in the drop of water, so Spirit and Matter disappear as such when Unified one in the other. Infinite balance is gained in eternal Unity. All are reunited in the One.

Radium and the Higher Mind.

The physical bodies of the race are in process of transmutation. The Divine Light has been materialized into the baser metals of the body and these must be raised and brought back to spiritual expression. We find a good illustration of this in the metal radium. This wonderful element is now known to materialize into a number of different elements until it is

now suspected by scientists that the metal lead is its final de-gradation or materialized expression on this plane. Here, we have an example of the lowering of the vibration of higher qualities and forces until a dense material status is reached.

In occult correspondence, lead is related to the lower personal mind. If lead is the lowest materialized expression of radium, then radium is the higher pole of lead, and must thus be the grade of substance of which the Higher Mentality is composed, or, we might say **must be the Higher Mind Itself**—therefore, probably explaining where the light of the Higher Mind comes from. The analogy between Radium and the Higher Mind is exact. Both are inexhaustible sources of radiation and illumination, and must draw power directly from Universal Mind. This same law applies to all the other elements and metals of which the physical body is composed. All have their higher correspondences, and on that higher plane are Qualities, Forces and Colors—the Soul, Light, or Spirit of the materialized aspect.

Plate II shows the three distinct rays called Alpha, Beta and Gamma which emanate from Radium. Each ray possesses different properties. The diagram shows the way in which

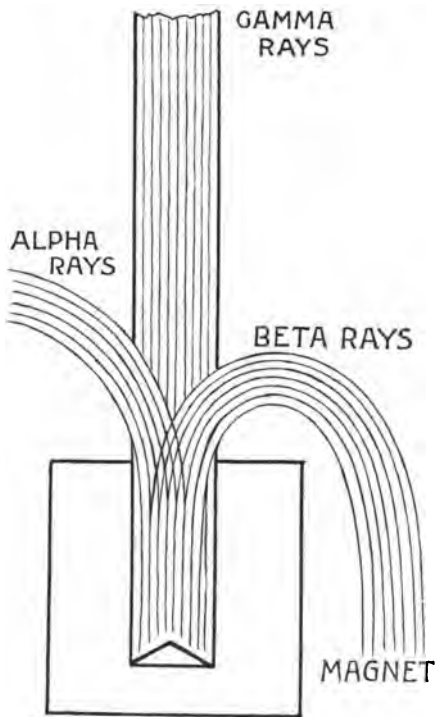


Plate II.
 Showing separation of radium rays by a
 magnetic field

these different rays are affected by the action of a magnet.

The Alpha rays are deviated from the magnet. The Beta rays are attracted toward the magnet.

The Gamma rays are not deviated at all under the influence of the magnet.

The Radium in the illustration is supposed to be at the bottom of a hole in a heavy block of lead. If of sufficient thickness, lead does not permit any of the rays to pass through its substance.

The Alpha rays are believed to consist of particles of electrical matter incredibly small that travel at the rates of thousands of miles a second. The Alpha rays are positively charged.

The Beta rays consist of particles of matter much smaller than the Alpha rays being about 1-1000 the size of a hydrogen atom and travel at a velocity of 20,000 miles a second, carrying a charge of negative electricity.

The Gamma rays are not deflected by a magnet but travel in straight divergent lines from the point from which they radiate. They are highly penetrating, more so than either the Alpha or Beta rays. The Gamma rays do not consist of material particles but are of the same

nature as the X-Ray, and are therefore supposed to be a form of motion. The velocity of the Gamma rays is that of light, namely, 186,440 miles a second. The almost incredible velocities of these rays would indicate that Radium is a substance which belongs to an inner and higher state of consciousness. A point must be reached finally where rapidity of motion and vibration would finally transcend space and time and come to absolute motion and rest in Infinite Deific Consciousness. The student may exercise intuition in seeking more analogies between Radium and the Higher Mind and the Spiritual Self.

There is but one Force, one Element from which all proceed, and to which all must return. In understanding this great law, we learn the origin and destiny of men and things, the underlying Unity of all things in essence. And this Unity gives the scientific basis of the Universal Brotherhood of all Creation."

CHAPTER V.

The Nature of the Soul.

The study of occultism then, is the search for hidden causes that move to action in the hearts of people, worlds and things. These innermost causes **within causes** are the motive power which keep the Great Wheel of Being and Non-Being ever revolving. If we come to know the real self of anything, a blade of grass, a stone on the roadside, a piece of metal, the real self or essence within the innermost within of animal, man, or god, we know the Real Self of All—or Diety. In the Infinitely Great we perceive the Infinitely Small. In the smallest atom is mirrored the Infinitely Great.

In these lessons the endeavor is made to reveal the unknown by the known, the invisible by the visible on the Law of Revelation through correspondences innately arising in consciousness. Keeping our feet—understanding—on the ground, therefore, we proceed.

Color—The Soul of Metals.

The Sun is a Radiating Centre of Light and

Life because its substance is in a state of Incandescence, which means, a high rate of vibration. If we place a bar of iron in the fire, it soon becomes hot to the touch. The iron is now in a higher rate of vibration than before we put it in the fire. If we leave it in the fire long enough, the iron bar glows with a dull light, but if the fire is hot enough after a time the iron bar becomes brighter and brighter, and finally reaches a state of incandescence where it radiates light. If the heat is carried still higher, the iron would burn and liberate its essential colors or color. These colors are called, by science, the Spectrum of the metal. The liberation of this color spectrum, the soul of the metal, means it has reached a very high rate of vibration, a rate of motion where it is no longer able to keep a form in **manifestation** on the outer plane save in terms of light.

As with iron, so with any other metal or element. All can be reduced finally to light and color. Now, in the sun, it is known that all the metals and elements we know of on earth are present, but not as iron, lead, gold, hydrogen, oxygen, etc., but in a state of Color or Light which is the spirit of the metals or elements. In the elements in the sun, all this light and life and energy is actual. In these same ele-

ments as they exist on earth today that light and energy is latent. That light is there but **within the atoms** unable to radiate through the dense outer body or form of the metal because its vibrations have become lowered, and it is now too dense.

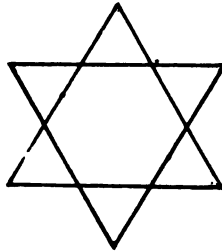
The Outer Form and the Inner Light.

The outer form, **as such**, must be lost to attain this high state of incandescence where the soul and spirit can radiate its light and life directly. Thus, in the case of our human forms, that light and energy is **within** us but cannot radiate until the vibrations of the outer form are raised sufficiently high, and when so raised we lose our form as we now understand it and we do not like that, as these stagnant dense outer forms are precious to most of us. The pure incandescence of the soul, however, cannot shine through these dense veils of matter save as we refine, sublime and raise them. And this explains the difference between the Sun and the earth and other planets. And it explains the difference between a Master of Light and an ordinary human being. A Master of Light has raised his outer bodily principles to the point where the real light within himself, which Light is his **Real Self** shines forth. And it is

this Light which "lighteth every man into the world"; this Light which is the "Way, the Truth and the Life"; this Light of the Infinite Spirit of Light which is organized line by line, element by element, point by point, quality by quality, into a soul structure or form built on a Divine plan, and which soul structure thus becomes a centre of CONSCIOUS IMMORTALITY because it is built up on that inner plane where Light itself is the only building material. And as that Light contains within itself all colors and possible shades of color, so it can be made to express in that organized soul structure, all possible shades of forces and qualities according to the plan on which the Spiritual Will of the Inner Self has builded. Thus, as we differ in personal characteristics, so we differ in soul characteristics as each soul will manifests a glory peculiar to itself.

CHAPTER VI.

Spirit and Matter.



Symbol of Spirit and Matter.

Matter and spirit are not separate one from the other but interpenetrate—one reflecting the other just as ice is steam **crystallized** and steam is ice **etherealized**. Thus, two interlaced triangles is the perfect symbol of spirit and matter in manifestation. The spiritual triangle with apex up draws the fires of life upward. The material triangle with apex down draws the fires downward. One is the inversion of the other. This is not merely symbolic truth, but an Actual Fact and is the real basic

cause of the action and interaction of all forces in and around us. The sun draws the earth and the earth forces to itself, seeking to reduce them to its own terms, and the earth draws the light and life of the sun to itself with the same purpose. That part of a plant above ground draws the earth and water forces upward, that portion, the root, beneath ground, draws the air and light down, both parts building and growing as a result of this interchange. The root could not exist merely as a root, but must have its higher self above ground in order to be in manifestation at all.

The same law is everywhere in evidence. As human beings for example, the spirit within us seeks to refine and spiritualize the material body and its surroundings to its own terms of beauty and perfection. On the other hand, the material self seeks naturally to **become** and to express in itself, and in its surroundings the light, the beauty, grandeur and proportions of its higher self in terms of matter. We say it seeks to do this and sometime in the evolution of humanity the correspondence will be perfectly externalized, but in the warfare of forces, this may seem to be delayed in particular instances, unless we look comprehensively. We must take humanity as a whole to see how sure-

ly and steadily this process has been going on through the ages.

The Mystery of Fire.

GOD IS A CONSUMING FIRE. The Universe is burning up. Everything is Ablaze. Our very bodies are ablaze, being consumed in the mighty Fire of the All-Fire—God. It is this Fire which is the cause of all motion in the cosmos. It makes the sap to flow, the heart to beat, and worlds to roll in space. By the same fact as fire reduces all things to itself, so it is seen how inevitable that all things and beings must finally be brought back into the One Flame. This central Divine Fire and Divine Light are the same. It has many expressions on many planes. There are material Fires and spiritual Fires. Fire is the greatest of scientific mysteries. No one has ever explained this tremendous power of affinity between elements which in the uniting creates fire. The process is known but not the WHY of the fact.

The physical fire is the material body of a spiritual fire, a material ray of light is the outer body of a spiritual ray or entity of light. As the vibrations of the physical plane are raised even physical fire will be raised to a higher spiritual expression. There will be

more light to it and less smoke, more radiance and less destructive force. Matter is materialized spirit, and spirit is etherealized matter. So as we understand the constitution of one, we understand the other.

The One Element.

Chemistry has formulated some seventy elements composing the matter of the physical plane. Occultism says there is but One element. Modern science is coming around to this view mainly through the study of the mysterious element, radium. Madame Curie regards it as **MATTER IN A STATE OF ATOMIC INSTABILITY**. In other words it approaches the One element of occultism before the same has sent out any elemental differentiations. Radium has many different rays of force, some of which actually materialize in other elements like helium. The further study of radium will reveal its kinship to astral and mental matter and also prove it to be very close to the **BASIC ONE ELEMENT** of Occultism.

Ethically applied, a knowledge of these truths must show the kinship of all souls In The One Soul. And this great fact is the root of the mighty truth in the Brotherhood of Man, and the Fatherhood of our collective Higher Selves—or God.

CHAPTER VII.

The Root Consciousness of Man.

Man is a God in Essence. A devil is a god inverted. A devil or evil forces can however, only invert divine forces on the outer coarser planes of life. **The Spirit belongs to All**—animals, men, angels, God. The Soul belongs to the many, grouped in clusters, constellations, rays and hierarchies and each group expressing different degrees of spiritual consciousness. The Body belongs to the one personality, the antithesis of the All.

On the plane of spirit all **di**-verse elements meet and become **uni**-versal in force and quality. On the plane of personality all universal qualities become divergent, so that any one personality can but express a modicum of that universal which is its root. As the personality is lifted up however, redeemed in terms of spirit, it gains the power to utter more and more of its Universal Root Consciousness, until the time comes when it, the personality can no longer keep form on this outer plane because of

the great cosmical energies flowing through it. It is then translated and in a body of finer forces functions on other planes, as in the case of Jesus after his crucifixion. Then the limitations of matter are overcome and the Will and Consciousness deal with the Many, with **worlds** and **races** and all the titanic powers back of evolving life. This is real Mastery, the actual ability, with height and depth of consciousness to administer nature's laws—yes, even to **make** Nature's laws in conjunction with those Cosmical Legislative Bodies which preside over the destinies of manifested Life.

Brain, Heart, and Solar Plexus Centres.

The physical man is built after the pattern of the cosmical man. He is a Unity in his Brain, a Duality in His Brain and Heart, and a Trinity in his Brain, Heart, and Solar Plexus Centre.

The Brain belongs to all parts of the body; in the brain is summed up the finality of every part of the body. The Heart Centre (which includes the Pneuma, the lungs,) belongs to the **Many** grouped in organs expressing various qualities and functions. Yet Heart and Brain are intimately related and interrelated, as are Soul and Spirit.

The Body, the personality is represented by

the Solar Plexus Centre for it is here that **personal form is created** and personal, kamic desires and qualities have their origin. This Solar Plexus Centre belongs to the personality and stands apart from the heart and brain yet dependent upon both. Yet its tendency is to pull away from all that heart and brain, or soul and spirit stand for, for it, the solar plexus-self is the lower unredeemed self, the vehicle, or chariot, in which the inner self rides, drawn into experience by the steed forces of the lower nature which must be controlled by the Higher lest the lines of forces become tangled and inverted and progress be stayed.

The brain is the realm where the elemental Regents reside who rule the body and its forces. It is the Plane of Heaven from a physical standpoint. Here matter is refined and sublimed and is more responsive and **alive** than in any outer region. The Solar Plexus abdominal region is where gross matter is being regenerated. Here are the Hells of the body also—the plane of putrefaction—the region where matter is disintegrated and when made fit raised to a higher status—even sent into the higher realms, the upper heavens of the brain for higher use.

The brain is made up of two main parts called the right and left hemispheres. The right side

of the brain governs the left side of the body; the left side of the brain the right side of the body. If the left side of the body should be paralyzed, it indicates that the right side of the brain is affected and **vice versa**. This is because the fibres from both sides cross near the base of the brain.

The Crucified Ego.

The Ego has his seat of power back of the brain in the astral world, but he is connected with, and works through the brain— is in fact **incarnated** in the brain during a life period. The Ego is held to matter by the iron nails of Desire, and we have in the brain a symbol of Calvary, the place of a Skull where the lines of life (nerve fibres) form the Cross and where the incarnating Ego is crucified in matter between two thieves, the Lower Self who would drag him down and the Higher Self who would draw him up. When the Ego triumphs he draws the lower self into higher realms, by process of transmutation, and both lower and higher are with him in Paradise.

The next lesson will deal particularly with the occult functions of the Pineal Gland and the Pituitary Body.

CHAPTER VIII.

The Pituitary Body.

The Pituitary Body is a small reddish gray mass occupying the Sella turcica—a saddle-shaped depression of the Sphenoid bone of the skull. The Sphenoid bone is a wedge-shaped bone placed across the base of the skull near the middle and it enters into the formation of the cavity of the cranium, as well as the bony structure of the eye-sockets and the nasal regions. So much for the location of this important body—and the location has its significance. It is about one-half inch broad, one-quarter inch long, and one-quarter inch high. It is formed of two distinct parts called lobes which are united. The anterior lobe is bean shaped and the posterior more rounded. The Pituitary Body or gland is so called from its being erroneously supposed to discharge **pituita** (slime) into the nostrils.

The Ductless Glands.

Physiologically, the Pituitary Body is classed

with the Vascular or Ductless glands of the body. In Kirke's Physiology, vascular glands are defined as follows: "The materials separated from the blood by the ordinary process of secretion in glands, are always discharged from the organ in which they formed, and are either straightway expelled from the body (as in the case of the kidneys), or, if they are again received into the blood, it is only after they have been altered from the original condition, as in the case of the saliva and bile. There appears, however, to be a modification of the process of secretion, in which certain materials are abstracted from the blood, undergo some change, and are added to the lymph or restored to the blood without being previously discharged from the secreting organ or made use of for any secondary purpose. The bodies in which this modified form of secretion takes place are usually described as Vascular Glands or glands without ducts, and include the Spleen, the Thymus, and Thyroid Glands, the Suprarenal Capsules of the kidneys, the Pineal Gland and Pituitary Body, and the Tonsils." Kirk further adds: "The opinion that the vascular glands serve for the Higher Organization of the blood is supported by their being especially active in the discharge of their functions during foetal life

and childhood, when for the development and growth of the body, the most abundant supply of highly organized blood is necessary.”

Ductless Glands—Doorways of Life.

Let us remember that the blood is a stream of life force—Prana—on the physical plane, the spiritual root of which is ATMA. If this be so, then the vascular organs such as the Spleen, Pituitary Body, Pineal gland, etc., would be intermediaries—doorways—so to speak between Physical Life differentiated as Prana coursing in the blood stream, and Spiritual Life, the highest synthetical expression of which is ATMA. The Pituitary Body and Pineal gland therefore, being placed in the brain, would under certain conditions of development serve as **points of contact** between the brain consciousness of the Outer Man, and the higher consciousness of the Spiritual Self. And as the Spiritual Self is ONE with all Spiritual Selves, such conscious contact between the two planes would **illumine** and **unveil** the mysteries of GOD and MAN on all the planes of Being, both Finite and Infinite.

Seat of the Mental Principle in Man.

Occultly, the Pituitary Body is the seat of Manas—the Mental principle. Manas, how-

ever, has its higher and lower aspect or division, and we find this represented in the two lobes of the Pituitary Body; the anterior and larger lobe functions the lower mentality, and the posterior smaller lobe the higher principle of intellection. Through the Pituitary Body, as the seat of Manas, the Will is Energized—both higher and lower Will according to the status of evolution the individual is in. Manas energizing Will is the great Principle of Selection and Discrimination operating everywhere in the Universe. It is the **cause** of all changes in nature, organic and inorganic, from birth, growth and dissolution. Cosmically, it is Fohat, the great Universal Will or drawing and driving power of the Universe—the cause of all motion in worlds or atoms.

Functions of the Pituitary Body.

This Manasic principle of Selection, having its seat in the Pituitary Body, is active in every part, organ, and cell of our bodies. Certain reported discoveries by Dr. C. E. de M. Sajours, of Philadelphia, editor of the "Monthly Cyclopaedia of Practical Medicine," bear out this Selective function of the Pituitary Body. He found that its removal stopped all organic function. Also that it governs every blood-making

organ that produces secretion. The front lobe he discovered contained an organ that detected impurities in the blood **by the sense of smell.** The rear lobe governed glands such as the kidneys, lungs, etc. **In fact the whole array of disease-resisting forces in the body depends upon the Pituitary Body.** When disease in any form occurs, the Pituitary Body regulates the secretions and causes the proper organ to increase or decrease its work, to throw out into the blood stream the proper chemical elements for overcoming the disease and so restoring the balance of health in all parts.

It is also thought that premature old age is the result of some disease of the Pituitary Body. Acromegaly is a disease characterized by enormous enlargements of the joints producing giants and giantesses. Most of the giants of modern times have had this disease and it is a result of a definite disease of the Pituitary Body. The query naturally arises: were the normal giants of olden times produced as a result of certain evolutionary changes in the Pituitary Body?

Physiologically then, the Pituitary Body is the Mentality of the Organic Functions. **Psychologically**, when its forces interact with those of the Pineal Gland,, the highest power of Spir-

itual Vision and Cognition is awakened and the Relations of All Things and Creatures to the Creator made Manifest on any or all planes of Being.

In the next Lesson the Pituitary Body will be considered in connection more particularly with the Pineal Gland.

CHAPTER IX.

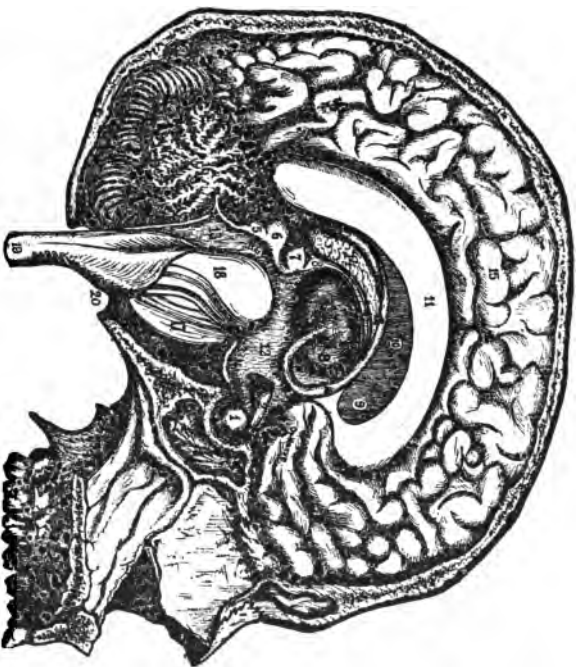
Pituitary Body and Pineal Gland.

The Pituitary Body being an organ through which the pure Manasic (Mental) essence functions as shown in the preceding lesson, let us now inquire as to its relations with the Pineal Gland.

Vacuoles and Ventricles.

In Chapter III certain Vacuoles or clear spaces as found in a cell were referred to, and the statement made that the etheric or magnetic-desire life of the cell acts through these spaces driving the cell to act through the **desire energy** transmitted. Also, "**These spaces in the cell correspond to the Ventricles of the brain and the Central Canal of the Spinal Cord through which the etheric astral man receives and transmits impulses.** These spaces or ventricles have to do with the myster of the Inner Breath."

There are a number of spaces in the brain called Ventricles. One of these is known as the Third Ventricle. This Third Ventricle is directly connected with the Pituitary Body in



1. Pituitary Body.
2. Infundibulum.
3. Optic Thalamus.
4. Fornix.
5. Truncus. { *Corpus Quadrigemina*
6. Nucleus. {
7. Pineal Gland.
8. Peduncles of Pineal Gland.
9. Position of the Corpus Striatum.
It is shaded *—* the Septum Lucidum.
10. Septum Lucidum.
11. Corpus Callosum.
12. Third Ventricle.
13. Fourth Ventricle.
14. Velum Interpositum.
15. Cerebellum.
16. Pons Varolii.
17. Medulla Oblongata.
18. Spinal Cord.
19. Foramen Magnum (of the Skull)
- 20.

Plate III. THE BRAIN. Showing location of pineal and pituitary glands and the anatomical relation of these to other important brain centers referred to in the lessons.

front, and with the Pineal Gland behind.

Plate No. III shows very clearly the relative positions of the Pituitary Body, the Pineal Gland and the Third Ventricle. In this plate it will be noted that the Pituitary Body is attached to the front extremity of the Infundibulum, and the Infundibulum it will be seen by the plate projects into the Third Ventricle. The word **Infundibulum** means a funnel, which is exactly what this organ is—a hollow conical process, as defined by anatomy. The plate will also show how the broad end of the “Funnel” projects into the Third Ventricle, all of which is significant. A canal passes through the Pituitary Body which connects it with the Infundibulum.

Anatomy of the Pineal Gland.

The Pineal Body or Gland is a reddish body about the size of a small cherry stone, and is named from its supposed resemblance to a fir-cone.

It also has a Central Cavity. As said, it is connected with the posterior part of the Third Ventricle projecting backwards and downwards between the superior pair of Corpora Quadrigemina. The Corpora Quadrigemina are the Centres of Sight and this close contact of the

Pineal Gland to these Centres has great significance. The Corpora Quadrigemina being of course the Centre of outer sight and the Pineal Gland the great Centre of inner sight for the Thinker dwelling in his marvelous City of Seven Gates—that is, the seven orifices in the head through which that Thinker contacts the outer world.

Influence of Pineal Gland on Sex Function.

PHYSIOLOGICALLY the latest scientific data on the Pineal gland is corroborative of the creative function of this mysterious organ. From most careful investigation and experimentation, men notable in the field of science, find as follows:

1—The pineal gland undergoes a normal physiologic atrophy (wasting) at the time of puberty. When physiologically active therefore **SEXUAL FUNCTIONING IS INHIBITED**. When the gland is not functioning so actively as after puberty, **SEXUAL FUNCTION ASSERTS ITSELF**.

2—In cases of tumor of this gland occurring before puberty, and which would inhibit the action of the gland, it has been noted that in the child so affected, there was marked mental precocity, increase of weight with overgrowth of body, and **earlier sexual ripening**.

3—This has been confirmed by experiments on animals. Removal of the pineal gland in animals like guinea pigs, etc., shows a hastened development of sexual organs and earlier breeding than is normal with such animals.

The above purely scientific deductions based on observed facts are intensely interesting. With the decline of the sexual function with old age there is likely to be a resumption of the activity of this gland. However, the facts shown above would point to one general basic conclusion, namely, that with the atrophy of this gland at puberty, creative energy functioning in the pineal gland shifts to the sex organs hitherto dormant. In other words, from the upper pole to the lower. The higher pole is regained through the awakening of the higher activity of the Pituitary Body which indraws the lower creative energy into itself and under right condition correlates those forces with the pineal gland arousing it again to active functioning, either temporarily or indefinitely, as the case may be. This means real spiritual development.

The Brain Centre of Vision.

The correspondence to any organ of seeing in the body would be the Power to see resident in

some part of the brain—and the same with all organs in the gamut of the senses. Thus the Corpora Quadrigemina is the Centre of the Power of Seeing—in other words the **power** of the personal Ego working through that Centre to Visualize Color Vibrations—or rates of vibration in terms of color. The Visualization of color vibrations is the Power of Vision—for vision is the Sensing of Color or shades of color no matter how subtle or fine, or coarse or intermixed. Any substance that is perfectly colorless **is invisible**.

The Optic Thalami.

The Pineal Gland is attached at its base by two nerve cords which connect it to the Optic Thalami. And what are the Optic Thalami? According to the most advanced physiologists, “they are the organs for the reception and condensation of the most sensitive and sensorial incitations from the periphery of the body (according to Occultism from the periphery of the Auric Egg or Envelope), which is our point of communication with the Higher, Universal Planes.” The Pineal Gland bears the same relationship to the Optic Thalami in terms of sensation, as it bears to the Corpora Quadrigemina in terms of Sight. In other words, the

Optic Thalami are the Centre for outer feeling or sensation, while the Pineal Gland is the organ for Inner Spiritual Feeling or Sensation.

Spiritual Functions of Pituitary and Pineal Glands.

As the Pituitary Body corresponds to the Manasic or Mental principle, so the Pineal Gland corresponds to the Intuitive Principle.

It may be fitting here to quote the teachings of H. P. Blavatzky on the interaction between the Pituitary Body and the Pineal Gland. This teaching was first given out under pledges of secrecy but has since been made public. She says:

“When a man is in his normal conditions, an adept can see the golden aura pulsating in both centres, like the pulsations of the heart which never cease throughout life. This motion, however, under the abnormal condition of effort to develop clairvoyant faculties, becomes intensified, and the aura takes on a stronger vibratory or swinging action. The arc of the pulsations of the Pituitary Body mounts upward, more and more, until just as when the electric current strikes some solid object, the current finally strikes the Pineal Gland, and the dormant organ is awakened and set all glowing with the

pure Akasic Fire. This is the psycho-physiological illustration of two organs on the physical plane, which are respectively the concrete symbols of the metaphysical concepts called Manas and Buddhi. The latter in order to become conscious on this plane, needs the more differentiated fire of Manas but once the Sixth Sense has awakened the Seventh, the light which radiates from this Seventh Sense illumines the fields of **infinitude**. For a brief space of time man becomes omniscient; the Past and Future, Space and Time, disappear and become for him, the Present. If an Adept, he will store the knowledge he thus gains in his physical memory, and nothing save the crime of indulging in Black Magic, can obliterate the remembrance of it. If only a Chela, portions alone of the whole truth will impress themselves on his memory, and he will have to repeat the process for years, never allowing a speck of impurity to stain him mentally or physically, before he becomes a fully initiated Adept."

The next lesson will deal more particularly with the **creative** aspect of the Pineal Gland and the Pituitary Body.

CHAPTER X.

The Brain, a Synthetic Centre.

In a preceding lesson it was pointed out that “in the brain is summed up the finality of every part of the body.” In other words, that the brain is the **SYNTHESIS** of the body. Or to put it another way—every organ and tissue of the physical **outside** of the brain is both an extension and a correspondence of some Centre in the brain.

The Ego seated on his Throne of Reason and Intuition sends out his rays of consciousness through nerves ramifying in every part of the organism. These nerves on an inner plane are conscious currents of life force. On this plane they have materialized into lines of sensitive matter, capable of receiving and conveying all degrees of vibrations concerned with the bodily senses. These nerves and nerve centers being currents of conscious energy projected by the Ego or Inner Self, have by processes of nutrition, growth and transformation, built up other tissues such as bone, muscles, arteries, etc., giv-

ing the Inner Self greater power of expression and experience in matter.

The body is thus a differentiation of the brain, part for part, and tissue for tissue. In consummating this differentiation into an outer body in this age and on this plane the brain sacrifices a part of itself—its Other Self in fact—for the brain is Androgynous—male-female—and we know that so far as the physical body is concerned we are born either male or female.

The Brain and the Third Root Race.

The Secret Doctrine refers to the astral Third Root Race as a race of **globular beings**—male-female creating by a process of Will and ideation called Kriyashakti. The brain of man is the correspondence of this Third Root race **in-drawn within** the cranium—which is a sphere filled, not only with brain matter, but also with Akasic and magnetic energy corresponding to the **atmosphere**, so to speak, of the Third Root Race. The brain still creates by the power of will or Kriyatshakti. From the magnetic **astral** matter within its reach it creates all mental forms, ideas and thoughts—all of which are the creations—offspring on the astral, mental plane of this brain entity living within the Akasic sphere of the skull chamber—the Cave of the Mind.

The power to create mental images and thought forms on the inner plane is analogous to the power of creating physical forms on the material plane of sex, and involves the same **corresponding modus operandi**. In the brain sphere, however, we have an organism undifferentiated as to sex functions—or the male-female **in one**;—and so its ideation progeny are **SELF-BORN**—within its own organism without outside contact, as must be the case on the lower differentiated plane of the body outside of this Akasic brain sphere.

A Third Sex.

That part of the organism outside of the skull cavity is differentiated mental or brain substance, and in the process of extension and differentiation into these bodily organs and tissues, the male-female, positive-negative, brain entity sacrifices and loses one of its poles or corresponding sex parts outside of its native sphere; that is, such sex part is not represented in that outer body or is represented so latently as to be overwhelmed by the other active sex part. So we have the two sexes in manifestation in the outer bodies of the Race in this age, and if we could imagine these bodies themselves again differentiating on a **still more outer plane**, a lower or third or fourth sex would come into

existence—and so on as the differentiation proceeded **outward**. As we go **in**, the sexes are indrawn and all differentiation disappears more and more, until the **TWO IN ONE** disappear as such and there obtains a **THIRD SPIRITUAL SEX** so utterly different from all of our ideas of sex that is designated by the term **SEXLESS**.

The spiritual, mental and psychic creations of musicians, artists, poets, scientists, and inventors show the high creative functions of the brain and the higher and more spiritual these creations, the more perfect the action and interaction between the Pineal Gland and Pituitary Body and co-ordinating parts. This is because the Pineal Gland, the Pituitary Body and their appendages correspond to the lower sex pole—the male and female generative organs of the physical body. The highest spiritual ideation is male-female, positive-negative in quality whether it be music, art, poetry, aspiration, prayer or desire. Take away one pole and there remains a one-winged imperfect something.

The Divine Marriage.

Such organs as the liver, spleen, kidneys, etc., receive **gross** matter and substances from the

blood stream and transform and transmute the same according to the function of said organ, but such psychic organs as the Pituitary Body and Pineal Glands receive only the **FIERY EMANATION** or **AURA** of the blood and make spiritual use of the same in its functioning.

Molecular motions in the Pituitary Body cause psychic vision, but such motion may be caused by many things, even by outer irritation as by pressing the eyeballs causing flashes of light because the Pituitary Body is connected with the optic centre as has been pointed out. Fevers and disease, drunkenness, etc., may also cause disorderly motions in the Pituitary Body giving rise to hallucinations.

Molecular motions in the Pineal Gland cause Spiritual Clairvoyance but to make this Clairvoyance illumine the fields of the Universal, the fires of the Pituitary Body must unite with the fires of the Pineal Gland, and this union means that the Sixth and Seventh Senses **have become as one**, or in other words that the individual consciousness is so indrawn that the Magnetic Sphere of Manas—the highest Mentality, and Buddhi—the highest Spiritual sense are conjoined. This is the highest Yoga, the **DIVINE MARRIAGE OF MATTER AND SPIRIT**, or of **LOVE AND WISDOM**. Hermes,

or Wisdom, is now united with Love—Venus or Aphrodite, and on the psycho-physical plane there results an entity of perfect balance—the Divine Hermaphrodite, or the Androgyne.

In studying these lessons the essential Unity of all Life should ever be borne in mind. The correspondences made should be applied everywhere and to everything for any process operating in the human body also operates in the cosmos, in a world, as well as in a cell or atom. The birth of a human being or a **thought** is analogous to the birth of a world or a universe. All forces operate from within outward whether they be creative forces or otherwise. Hidden causes should be searched for in the Heart or Centre of all things.

CHAPTER XI.

Reincarnation.

In these lessons the occultism of the brain will not be overshadowed by the occultism of the heart and the inner spiritual centres, but as the brain differentiates and materializes in more understandable terms, the inner forces and fires, the effort in these lessons is to give the student a practical basis to start from and hence to better understand the functions and correspondences of the inner, or auric centres. In other words by passing through the brain, spiritual forces are materialized and become intellectual forces or thought, but the seat of the process is in the spiritual nature however inverted or perverted the thought may have become by evil or abnormal desires and will.

Pure natural thought is **heaven born**, being the regenerated essence of the universal finer forces working through the bodily organs and cells and finally reaching through the fiery emanation of the blood, the brain centres and reflected and cognized there as Thought crea-

tions. In other words, through the microcosm, Man, cosmical forces play and interplay. Universal impersonal forces correlate with the personal cells and organs and are given color, quality and character by the personal or microcosmic will of man as a whole or by the collective minute cellular beings of which he is made up. As man has **actually** or **potentially** represented in him all the forces of the Cosmos, so each cell in man has in it all the forces of the man in its degree, from the physical to the highest mental and spiritual.

Reincarnation of Cells in the Body Cosmos

In the physical body are millions of cells **dying constantly** with each movement of the body, each beat of the heart, each voluntary or involuntary act of the organism. When a cell entity so dies, the same corresponding process **must** happen to its various principles as happens in the case of the man as a whole dying. The various principles are separated, the lower physical part yields up its forces for giving energy **to the body**. The higher principles, as the mental and spiritual, rise to the proper planes—the mental aspect or force of the cell passing in the aura of the blood stream to the mental centres, thereby furnishing material for

mental operations. The spiritual aspects or forces of the dead cell pass into the higher or lower creative centres or heavens of the body, and are there used for the highest purposes and economy of the Microcosm, Man. The lower unregenerated elements of the cell enter the bloodstream but are withdrawn from the same by the proper excreting organs and sent into the hells of the body for regeneration or elimination in the lower intestinal and urinary tracts of the organism.

Millions of cells are also being born constantly in the organisms and these are again **ensouled** by the streams of spiritual Egos sent forth from the higher plane of the brain which has in the meantime received force and power from the spiritual and mental cells ascending to it and has also imparted to the same a tremendous dynamic mental and spiritual power until surcharged they are eager to rush forth again seeking experience in lower material embodiment and thereby give up the surcharged life they have received from contact with the higher planes of consciousness transmitting in this way some of the energy of the higher planes to the lower and so helping to raise the vibrations of the lower by ceaselessly incarnating and re-incarnating, until the whole body has received

the greatest possible development for that cycle of manifestation.

So much for the reincarnation of the cell. As above so below, as with the cell, so with man. What **happens** after death and the **function** of death, or that change man calls death, is made apparent by this explanation and correspondence.

Humanity—a State of Consciousness.

Bear in mind, however, that with the spiritual principles or soul of the cell, so with the Soul of Man, its heaven is not a place, but a state of consciousness. Yet that state or plane of consciousness in the case of the cell would be **within the Cosmos**, so to speak, of the man. So the heavenly plane of consciousness of man is within the Cosmos of Humanity in its higher states. So that as in the case of the cell when it dies, its powers, energy and usefulness are not lost, but its principles separate and go to their corresponding **lokas** or centres; likewise, when a human being dies, he or she, does not go outside of the aura or cosmos of humanity—but humanity as a whole being a state of consciousness in reality, the various forces and principles of a human being on death pass into appropriate spheres and add power to that sphere, and in

due time, owing to the fixed laws of action and reaction, of centripetal or centrifugal forces, which govern spirit as well as matter, those **discarnated** forces of the mind, Soul and spirit, are again reassembled on the lower planes of manifestation. So that when a man dies if he be a genius, a master of art, of music, poetry, of science or invention, or a great soul from a Saviour down, he does not die out of the aura of humanity, but his powers are **still alive** and vitalize that humanity as much and even more than before, though those powers may not be so concentrated as before, though any other unit of the race on this plane may draw upon those powers, mental or spiritual, according to their ability to so draw. Thus nothing is lost by the death of any one or anything, because there is no place for it to be lost in.

As the cells of the body on dying add power and glory to the higher realms whence their spiritual forces ascend, so on dying we also help to make the Heaven of Humanity greater and more glorious by adding our spiritual essence to it in jewels of Light, Truth and Beauty, to the extent that we have fashioned such in our incarnation. In other words, our divine birth-right is to work with God building the heavens as well as the earth.

CHAPTER XII.

The Seven Harmonies.

In the last lesson it was stated that the Heaven of the Cell, as in the case of man, was a **state of consciousness** and not a place. As there are **SEVEN HEAVENS** or higher states of consciousness which it is possible for the soul of man to enter, so are there seven heavens or states of consciousness into which or rather with which the spiritual consciousness of the cell may be identified. These heavens in the case of the cell entity are the seven cavities of the brain connecting with the central cavity running all the length of the spinal cord. These cavities are termed in occultism the **SEVEN HARMONIES**. These chambers may be graded from above down as follows:

1. The Cavity of the Pineal Gland.
2. The Cavity of the Pituitary Body.
3. The Third Ventricle.
4. The Fourth Ventricle.
- 5 and 6. The two lateral Ventricles.
7. The Cavity of the skull itself—the total of all the other cavities.

All of the Cavities and Ventricles of the brain

are connected by intercommunicating channels or canals, one with the other, and with the Central Canal of the Spinal Cord which as said runs the entire length of the Cord to the base of the spine. Here then, we have in the physical body, enclosed **within** it, an ethereal magnetic realm in which the astral self contacts the brain and spinal centres and in which etheric realm the finer forces play and interplay.

Thoughts, Desires, Health and Disease.

Every desire, thought and feeling had by a human being, arouses a vibration in the brain cavity or sphere which **corresponds to that desire or thought** in terms of quality and kind. The highest spiritual desires and aspirations of which man is capable and which is beyond mere **self** arouses into activity the high force and essence in the pineal gland.

The lower desires and impulses in man arouse corresponding forces in the cavities situated nearer the base of the brain where the merely **vital** and more **animal** centres are located. If gross desires and thoughts are the rule, gross forces are energized in these lower spheres and these forces pass downward into the Central Canal and circulate by absorption in all parts of the body, **materializing** the body the more

and rendering it grosser and more animal and finally causing by direct impact and reflection, diseases, which in their essential nature correspond with the **desire** or thought forces which are the real inner cause of such diseases. In other words, the natural Harmony of one or more of the Spheres of Harmony has been disturbed and may even cause physical disease if it has gone far enough, in order to restore by pain and sacrifice the harmony due to the fixed inexorable law that the outer must in time adjust itself to the inner, the material to the spiritual, no matter what the cost or suffering may be—as INFINITE GOOD must ever be greater than **finite** evil.

The Inner Building Light.

In terms of sight, the pure natural color of the etheric substance in any one of these inner Chambers of Harmony glows brighter and clearer, as the **desires, thoughts and actions** of the individual become more **unselfish** and universal. On the other hand, if **selfishness** and animality dominate, the pure natural color of the inner etheric substance, becomes gradually filled with **dark or black centres**, each centre marking some individual selfish desire, thought or act, of the lower self. Truly important is

the eternal fact, that ALL LIFE IS ONE LIFE, that Men and Angels, God and Devils are bound together in the ONE SUPREME LIFE; and that, as Gods and Angels can brighten the earth, so can men and devils dim the splendor of the heavens in some degree by **evil done, or desired.**

The UNIVERSAL DIETY is being perfected by the perfection of its individual and minute parts called atoms, molecules, cells, men, angels and worlds. So man is being perfected by the perfection of his minute parts, and each thought, desire and act has a **constructive** or **destructive** power on his inner immortal body either building in accordance with the DIVINE plan or tearing down what has been built up in proportion to the amount of downward energy exerted. God is still building the heavens and the earth, and **we were** with Him and of Him in the beginning as **WE ARE NOW**, no matter what embodiment we may have had or on what plane of action we may have functioned.

The Link Between the Self of Matter and Spirit.

The etheric substance of the SEVEN HARMONIES is the **real link** between the **spiritual** and **material** selves of man. On this sensitive substance, the Higher Self reflects its messages, visions, and impressions, which are then re-

ceived by the brain cells and centres. Correspondingly, this sensitive substance receives impressions and vibrations from the lower self, which in this way may invoke (pray) the help of the higher forces, or may, as has been pointed out, if the desires are of evil nature, pollute and darken the pure sensitive ether of these Inner Chambers of Consciousness.

The interdependence of all Substance, Force and Consciousness must ever be kept in mind by the student of life.

CHAPTER XIII.

Ten Basic Truths.

In these lessons, while much has been pointed out as showing the occult, psychic, and spiritual correspondences of the brain and its centres, volumes more could be written if the scope of these lessons permitted finer particularizing. The main object is to indicate to the thoughtful student, the fact and the working of the laws of correspondence, and the interaction of forces between higher and lower planes, in consequence. Once this fundamental truth is realized, the mind and intuition will make its own deductions and so arrive at truth without any such lessons as these, or books or teachers of any kind. Then every fact of knowledge in nature and in life, in general and in details, all the **commonplaces** as well as the big things are seen and estimated from another standpoint, from interior angles of spiritual vision and the value of every truth measured truly in all its relations and inter-relations.

We will now leave the brain and take up an-

other field of study. We have seen that man is an epitome of the cosmos. Every part, organ and tissue in him has its celestial correspondences in the Heavenly Man—God,—man being thus literally an image of God—the collective creative forces of the Universe entitized as the ALL-BEING. The drop of water from the ocean contains all the elements that are in that ocean, even to the germ of life itself.

Before proceeding to the occultism of the Heart, the other pole of the Brain, a few basic general truths should be pointed out and kept in mind.

1—God is the highest spiritual essence of Light, Life and Love.

2—This Light, Life and Love—all one thing—is PRIMORDIAL SUBSTANCE ITSELF, out of which the Universe, worlds, men and all things have been created.

3—This Primordial substance does not **possess** Intelligence or Wisdom or Knowledge or Power, but IS Intelligence, Wisdom, Knowledge and Power as well as all the spiritual qualities such as Faith, Justice, Compassion, etc.

4—Being these qualities themselves, in whatever form this primordial substance manifests, IT KNOWS HOW TO ACT, **what to do**, whether manifesting in a planet, an insect, a blade of

grass or a man. According to the key-note of its form, it will be moved to appropriate action, for knowledge, light, intelligence—god—light, life and love—is at the root of its being.

5—This Primordial Substance manifests in an infinitude of forms, the sum total making up the whole universe. These forms whether of worlds or of men are merely materialized aspects of some ray or quality inherent in this Primordial Substance or God—and thus each form manifested is for the time being, a materialized spiritual force or quality. That this spiritual force may become **inverted** and so be **evil** in its action does not contradict the above statement.

6—While each form has its dominant note and quality, yet it has all the notes or qualities of life latent or expressed, so that it has **the possibility of calling as much of God out** as any other form, as it gains the power to utter the Light within itself. This applies to men, angels, worlds, animals, trees, or blades of grass.

7—Man is thus an epitome of God. In time when all his qualities are perfectly expressed, he will perfectly express God and thus **be God**—One with God—all Life, Light and Love.

8—Every thing in Nature expresses some quality or character of God,—**trees, flowers,**

stars, insects, men and animals.

9—Being made in the image of God, each part and organ of man, expresses or represents some character or quality of God— or Primordial Light, Life and Love.

10—As each part and organ of man draws in purity upon, and assimilates the forces and qualities flowing naturally into it from the Inner Source, it becomes clearer, purer, more beautiful and noble in appearance and function, whether this be the body as a whole or some part like the eye, ears, nose, mouth, hands, feet, etc., for by this assimilation these parts have drawn upon the SOURCE OF ITS REAL LIFE —ITS HIGHER DIVINER SELF, which IS all Purity, Beauty, Health, Truth and Light. But if these forces be drawn upon selfishly and with motives of impurity, the corresponding organs and parts become distorted, ugly and unhealthy. as selfishness and impurity **invert** Divine and Natural forces.

From this standpoint we will take up the Occultism of the Heart in the next lesson.

CHAPTER XIV.

The Mystery of the Heart.

The Mystery of the Heart on the lower planes is the mystery of the Kama Rupa (the forces of desire which brings the body into manifestation). The Mystery of the Heart on the **higher planes** is the mystery of the Sixth or Buddhic Principle, the Spiritual Heart, which transcends all Form but brings the spiritual bodies or principles into manifestation, from out the synthetic Atmic Plane.

The student is referred to Chapter III of this series, on the correspondences of the Cell. It is there stated that the "Spaces in the protoplasm of the Cell correspond to Kama Rupa, the body of Lower Desires." It is necessary to bear this point in mind in order to understand the origin of the Heart from its beginning on the physical plane, thus also showing its connection with the inner spheres.

It was also stated that these Spaces or Vacuoles have to do with the mystery of the inner Breath.

The embryological origin of the Heart and the blood vessels are practically the same, the blood vessels of the body are in fact **extensions** of the heart as an organ, so that the heart in that sense is all over the body, having its ramifications in every part of its organic world.

The Science of Histology is the study of the microscopic anatomy and development of cells and tissues of the body. Authorities on this science thus describe the origin and development of the Blood Vessels and the Heart. "Vacuoles—Spaces, are formed within the cell, and as they increase they run together, and a cavity filled with fluid is thus produced in the interior of the cell, while blood cells are formed within this cavity." Many cells so modified are joined together and thus blood vessels are wrought in the ovum, the creative cell, almost at once on impregnation. Again in regard to the origin of the Heart, histology says: The origin of the heart itself is in some respects similar to that of the vessels, insofar that it is by the vacuolated formation (the blending of the spaces in the cells) that the cavity of the Heart originates. We also learn that in mammals, which includes man, in fishes having body structure, and some birds, the heart "has at first the remarkable form of **two tubes** separated

to some distance from each other, and the formation of the single cavity of the heart is due to the gradual approximation of these tubes and their coalescence into one by the union and subsequent disappearance of their adjacent primitive walls." This first formation of two tubular elemental heart centres indicates a polarity and differentiation in the development of this organ which polarity is however overcome by the blending of the two poles later on. As the history of the development of the embryo is the history of the development of the Cosmos and of Man this would indicate that in the past, in perhaps the earlier kingdoms or races of life in its elemental forms on some astral plane, the heart centres were differentiated into two opposite forces, positive and negative, which, however, are now blended into one force with corresponding greater power of Unity and Life.

The Inner Breath.

The Kama Rupa centre being a congeries of elemental desire forces whose **FUNCTION IS TO THROW MATTER INTO FORM**, the Kama Rupa Centres, the Spaces in the Cell before mentioned, may be regarded as an **opening** between the physical and astral world **into which the inner pranic breath of life is breathed** creating thus a vortex of life forces in that cell

and throwing its protoplasm and matter into a form consistent with, and corresponding to the desire elements seeking outward embodiment. Thus worlds and creatures come into **ex-istence** from within. The same processes apply to suns, worlds, and systems of worlds. The hollow **Spaces** or **Spheres** within the earth transmit the corresponding Desire or Kama-Pranic forces, which, with irresistible might throw terrestrial substance into order and form and transmit to all parts of the earth organism, the creative and regenerating currents from within, urging the earth and all on and in it to evolve accordingly.

Blood—the Vehicle of Breath and Desire.

The Blood itself with iron its base, red of color, and being so intimately a part of this Kama Rupa Centre which brings the Heart and blood vessels into form, becomes naturally the vehicle to receive the inner Pranic Breath. It is thus literally the vehicle of the vital essence and as it absorbs the forces of the Kama Rupa Centre in which are stored all the desires and tendencies of the entity seeking embodiment, it can be seen how naturally the blood transmits hereditary traits and tendencies stored up in the Kamic Spaces of the Creative Cell. It is

now acknowledged by the highest authorities that hereditary tendencies, including health and disease tendencies, are stored up in the **blood stream**, and that the structural deficiency of body or organ is **secondary**. In hereditary mental diseases, the brain structure **may be perfect**, but the blood has been modified in some way by Kama Pranic forces operating in the blood and therefore the source of the disease is on the physical plane in the blood.

The next lesson will take up the more spiritual correspondences of the Heart.

CHAPTER XV.

Spiritual Correspondences of the Heart.

The human heart beats in the average person about 72 times per minute. The Sun which is the heart of our solar system beats once in eleven years. Back of every physical form there must be a spiritual centre corresponding in force, power and function to that outer form, organ or tissue. Therefore the spiritual heart of man is his auric heart which sends currents of spiritual blood—forces— throughout his entire auric being, which includes the physical— which might be considered as the lowest part, the dregs so to speak or the material precipitation chemically speaking, of the incompatible or unspiritual elements in the auric body and which, as yet, remain **insoluble**—will not be blended and unified with the spiritual body. The regeneration and spiritualizing of these lower elements is the work of experience in material incarnations—and makes such incarnations a necessity.

The Kingdom Within.

Bone, muscle, and nerves are the crystallized aspect of spiritual forces and qualities in the aura, just as the crystallized cube of gold thrown down in a chemical solution is the materialized aspect of a **perfected** and very high spiritual quality of life on **higher planes**—existing not **in form** but as a **QUALITY** in Deity Itself. For every material sun in the universe, there must be a connecting and corresponding spiritual or Central Sun. For every material heart, there must be the spiritual centre or heart corresponding. For every line of force or matter in the cosmos there must be the corresponding inner force—which is the real basis of the outer line. Everything has its real basis within, and the source of energy, the motive power, the power that makes the universe, the macrocosm or the microcosm go, that makes the Great Wheel of life forever revolve, IS **WITHIN**. And **within that** is another within and so on until the Deific essence itself is reached as the Source of All. In studying the mystery of the heart, therefore, we must bear all this in mind.

The Sanctuary.

The Heart is the centre of Spiritual Con-

sciousness; the Head is the centre of Psycho-intellectual Consciousness, and the Navel or Solar Plexus is the centre of Kamic Consciousness. The consciousness of the body is the collective consciousness of **all the cells of the body** except the heart, because the heart is a centre of Spiritual Consciousness. It is the Sanctuary of the Divine Spark—the God within. “In the heart is a spot which is the last to die, a spot marked by a tiny violet light; that is the seat of life, the centre of all, Brahma; the first spot that lives in the foetus, and the last that dies.” All the organs and tissues are nourished from the heart, but the heart is self nourishing. It also has its own independent brain (nerve ganglia) and under proper condition will continue to beat even after being removed from the body.

All great deep spiritual emotional feelings arise, and are felt in, the heart, but this great spiritual consciousness residing in the Heart, the Divine within cannot be guided by a person, nor its energy be directed by him until he is completely united with Buddhi-Manas. Until then this Heart consciousness guides the person—if it can. H. P. Blavatsky has said on this point: “Anyone who can reach up to, and receive at will, the promptings of this spiritual

consciousness must be at one with Manas—that is must have attained Adeptship. But the Higher Manas cannot directly guide the ordinary man; it must act through the lower Manas, and reach the lower Consciousness. The effort however should be continually made to centre the Consciousness in the Heart, and to listen for the promptings of the Spiritual Consciousness, for though success be far off a beginning must be made, and the path opened up.”

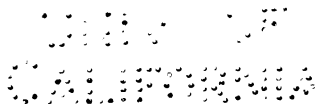
The Heart—A Central Sun.

The heart is the symbol and the Truth of Centralization. It is the analogue of the Central Sun. It is Paradise guarded by the Flaming Sword—the Spiritual Will and Consciousness from which flow its four rivers of life (blood)—to be distributed to every part of the organism.

The Heart is the real Centre of life, light and love—God. The brain has power to take these divine forces and weave them into patterns of beauty or distort them into images of darkness and evil—so man can build in accord with a divine plan or otherwise but the force wherewith he must build is primarily pure from the heart, and it is a doorway through which the forces of Infinite Love and compassion may

flow if invoked with the power of unselfish love and motive.

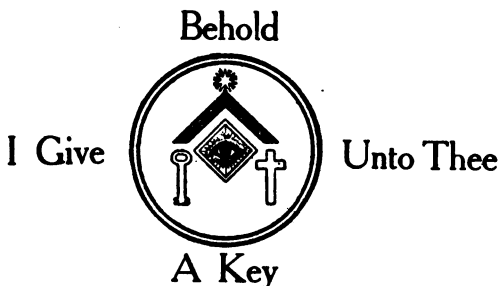
This lesson will end the first series on **Occultism for Beginners**. The main purpose has been to show that, starting from known material ground, man is made in the image of **God**, and that there is exact correspondence between the Heavenly and the terrestrial Man and Forces. That, if we can really understand any **material point or fact** or truth in the outer universe it is possible to find the corresponding spiritual truth and fact; and that every spiritual quality and force has naturally its material aspect, form or embodiment. That once these fundamentals are comprehended, the cosmos and all Nature becomes a Book of **KNOWLEDGE AND WISDOM** in which is written in **LETTERS OF LIGHT**, the history and the romance of the **INSEPARABLENESS** of all creatures, forces and worlds.



The Temple Artisan

A Magazine Devoted to
Mysticism, Social Science and Ethics

Each issue is replete with HELPFUL TEACHINGS on
the problems of life, the ORIGIN AND DESTINY
of things, and the OCCULT FORCES involved
in manifested life.



This Magazine
is renowned for the high
Messages of Truth it has been
transmitting to the world from the Masters of Light.

Published monthly. Price per year \$1.00.
Single copy 10 cents. Sample copy on application.

The Temple Artisan,
Halcyon, California

From The Mountain Top

A Masterpiece

The Book of the Age

Inner Light from Inner Spheres Shining through
Messages of Transcendent
Truth and Beauty



"From the Mountain Top" is a BIBLE OF LIGHT for all who aspire to travel the PATH TO MASTERY. 278 pages, beautifully bound in blue, gold stamped, clear type. Price \$1.50.

SPECIAL OFFER: "From the Mountain Top" and one year's subscription to THE TEMPLE ARTISAN for \$2.00. Send orders to

Halcyon Book Concern

Halcyon, California

HALCYON
PRINT SHOP



UNIVERSITY OF CALIFORNIA LIBRARY
BERKELEY

**THIS BOOK IS DUE ON THE LAST DATE
STAMPED BELOW**

Books not returned on time are subject to a fine of 50c per volume after the third day overdue, increasing to \$1.00 per volume after the sixth day. Books not in demand may be renewed if application is made before expiration of loan period.

FEB 20 1920

MAY 25 1921

8 Jul '62RH

REC'D LD

JUN 24 1962

DEL: 00 1997

U. C. BERKELEY LIBRARIES



054889705

367894

Roulet

UNIVERSITY OF CALIFORNIA LIBRARY

